

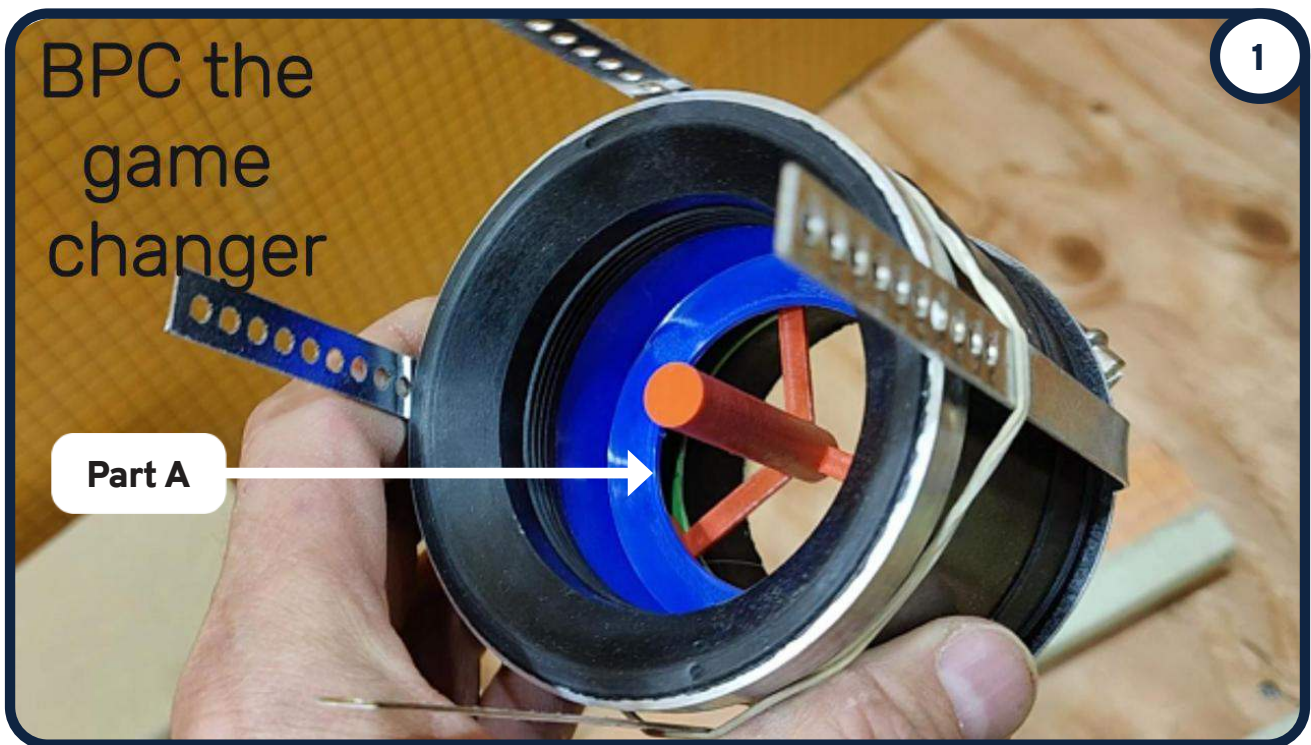
RAPID

RECESS

BPC Installation Quick Review:

Installation Manual

Blind Pipe Connector 2" - BPC (Model # RRBPC2)



Do not remove the red „Blocking Spider“ (part A)
until ready to engage the BPC with the drain outlet!

2 Cut the waste pipe

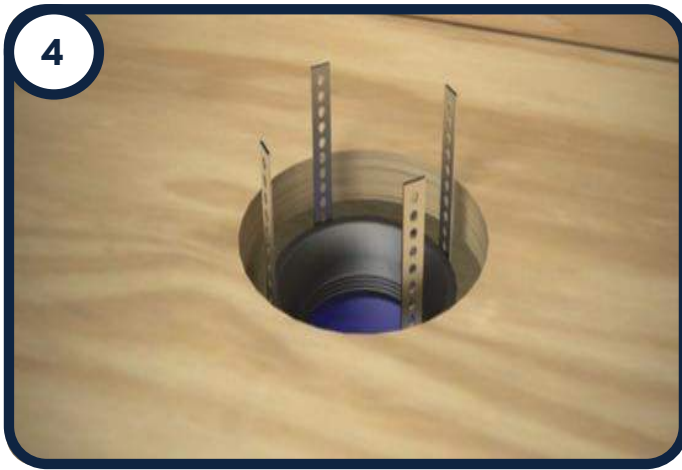
Cut the waste pipe coming from the P-trap 1 1/4" below the final location of the bottom of the drain outlet. The BPC has a 1/4" adjustment range, but the distance between the end of the pipe and the bottom of the drain outlet should be between 1" and 1 1/2".



3 Attach the BPC

Slip the BPC onto the waste line and tighten the bottom clamp with a screwdriver or wrench to the specified torque.





Drill a 4" hole

Drill or cut a 4" diameter hole over the location of the BPC and place the plywood to dry fit it. This is an ideal time to dry fit the foam shower pan, drain support frame, or the mud pack to ensure that the BPC is at the correct elevation.



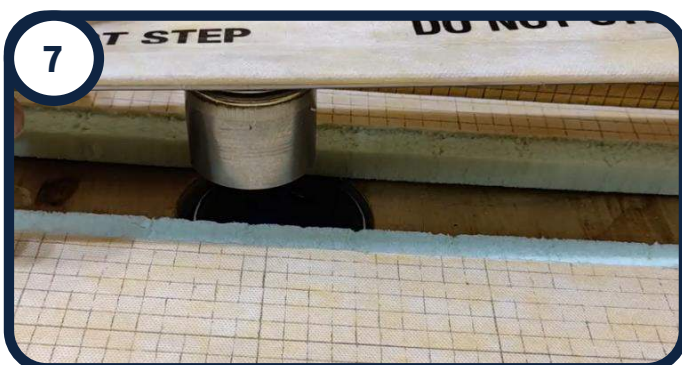
Secure the plywood

Once the BPC is set at the correct elevation, secure the plywood to the floor joists or Rapid Recess brackets. Bend the anchoring straps over the edge of the plywood and secure them with screws. This prevents the P-trap from moving and provides a stable platform for BPC activation.



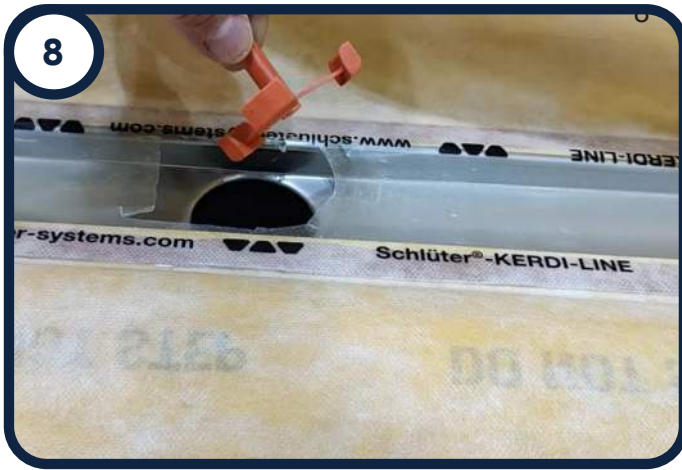
Dry fit the shower pan

Dry fit the shower pan/drain support frame to ensure it aligns with the BPC. For Shower pan-K, the drain support frame under the recommended line drain will be cut on all four sides to fit perfectly in the deeper recess with the Bracket kit-K15. Set the shower pan/drain support frame in thinset and press firmly in place.



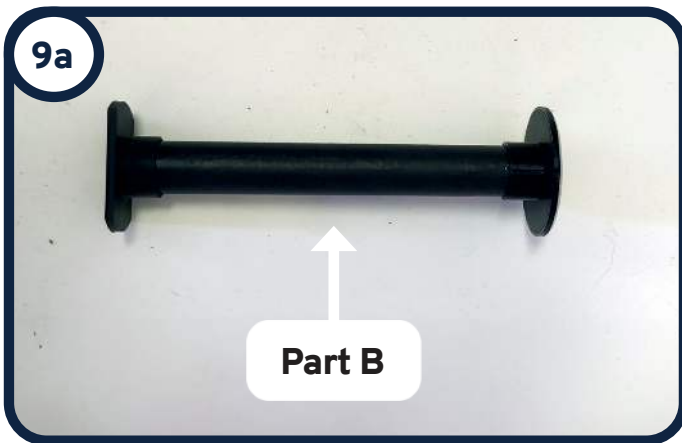
Set the drain in thinset

Set the drain in place in thinset.



Remove the Blocking Spider

Pull out the „Red Blocking Spider“ (part A) that prevents premature locking of the BPC. This can also be done before setting the drain if better access to the BPC is needed.



Insert the activation tool

Insert the activation tool (part B, included) but do not activate the BPC yet. Press on the drain body from above to ensure it sits tight to the tray/drain support frame and engages the BPC correctly, with no movement in the installation.



Activate the BPC

Once the drain body and flange are sitting flat and correctly positioned, hit the activation tool from the top with a rubber mallet or the palm of your hand. You will hear a resounding click, indicating the BPC spring is set and the drain is secure.

Links to BPC Installation and Explanations:

First review: <https://www.youtube.com/watch?v=xcu-Rvqqzlo>

Animated video: <https://www.youtube.com/watch?v=KEeUOmHIO0o>

For technical questions, contact our tech team at:

techsupport@rapidrecess.com or call us @ 970-852-0150



www.rapidrecess.com